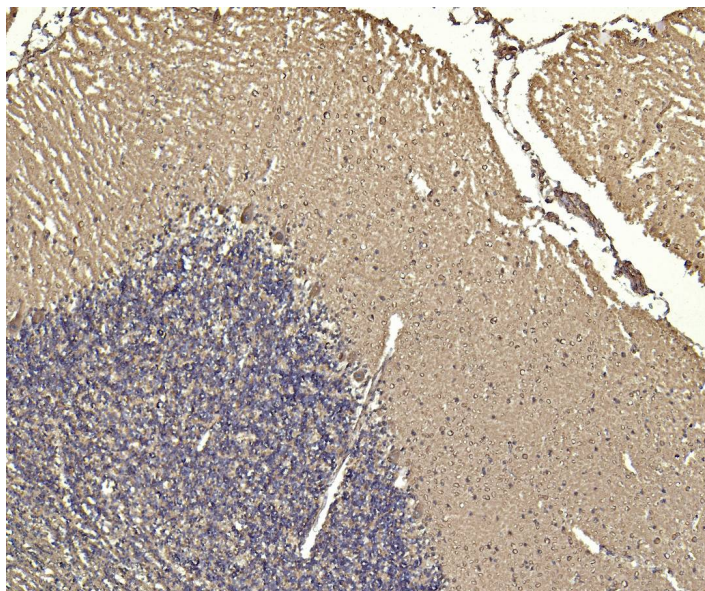


GOAT ANTI-SORL1 / LR11 (C TERMINUS) ANTIBODY

SKU: EB05045



SPECIFICATIONS

Formulation Supplied at 0.5 mg/ml in Tris saline, 0.02% sodium azide, pH7.3 with 0.5% bovine serum albumin.

Unit Size 100 µg

Storage Instructions Aliquot and store at -20°C. Minimize freezing and thawing.

Synonym / Alias Names sortilin-related receptor containing LDLR class A repeats|FLJ39258|FLJ21930|C11orf32|mosaic protein LR11|SorLA-1|gp250|SORLA|LRP9|sortilin-related receptor, L(DLR class) A repeats-containing|LR11|SORL1

Accession ID NP_003096.1

Blocking Peptide EBP05045

Immunogen Peptide with sequence C-TGFSDDVPMVIA, from the C Terminus of the protein sequence according to NP_003096.1.

Peptide Sequence C-TGFSDDVPMVIA

Purification Method Purified from goat serum by ammonium sulphate precipitation followed by antigen affinity chromatography using the immunizing peptide.

Shipping Instructions	Refrigerated
Predicted Species	Human, Mouse, Rat, Dog, Cow
Reactive Species	Human
Human Gene ID	6653
Product Grade	https://prod-vector-labs-pimcore-assets.s3.us-east-1.amazonaws.com/assets/products/image/elite_medium.png
IHC Results	Paraffin embedded Human Brain (Cerebellum and Cortex). Recommended concentration: 5-7µg/ml.
ELISA	
Detection Limit	Antibody detection limit dilution 1:64000.
Application Type	Pep-ELISA, IHC

SELECTED REFERENCES

[{"pmid": 21040701, "intro": "**This antibody has been successfully used in Mouse in the following paper:**", "title": "Implication of mouse Vps26b-Vps29-Vps35 retromer complex in sortilin trafficking.", "author": "Kim E, Lee Y, Lee HJ, Kim JS, Song BS, Huh JW, Lee SR, Kim SU, Kim SH, Hong Y, Shim I, Chang KT.", "journal": "Biochem Biophys Res Commun. 2010 Dec 10;403(2):167-71."}]

DOCUMENTS

- [Data Sheet](#)

GALLERY IMAGES

