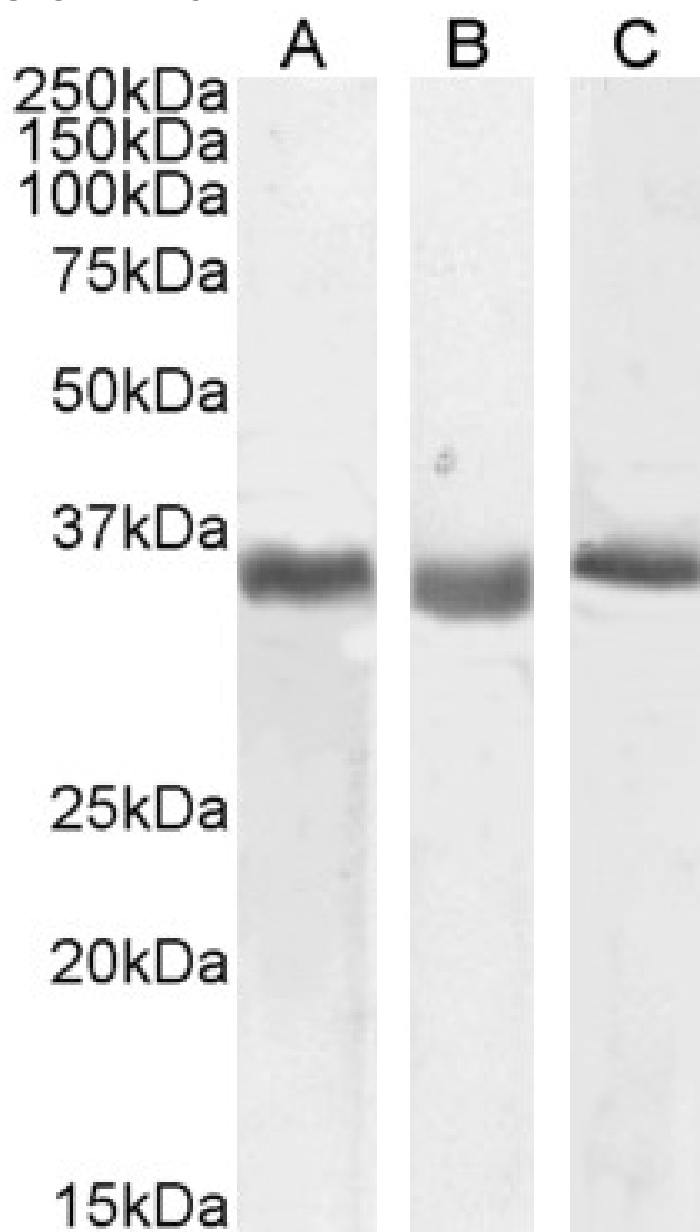


GOAT ANTI-SPON2 (301-315) ANTIBODY

SKU: EB11284



SPECIFICATIONS

Formulation	Supplied at 0.5 mg/ml in Tris saline, 0.02% sodium azide, pH7.3 with 0.5% bovine serum albumin.
Unit Size	100 µg
Storage	Aliquot and store at -20°C. Minimize freezing and thawing.
Instructions	
Synonym / Alias Names	SPON2 spondin-2 spondin 2, extracellular matrix protein M-SPONDIN MINDIN FLJ34460 FLJ22401 FLJ16313 DKFZp686G21139 DIL-1 DIL1 differentially expressed in cancerous and non-cancerous lung cells 1
Accession ID	NP_036577.1
Blocking Peptide	EBP11284
Immunogen	Peptide with sequence C-RTRYVRVQPANNGSP, from the internal region (near C Terminus) of the protein sequence according to NP_036577.1.
Product Comments	Reported variants represent identical protein: NP_036577.1, NP_001121797.1, NP_001185950.1
Peptide Sequence	C-RTRYVRVQPANNGSP
Purification Method	Purified from goat serum by ammonium sulphate precipitation followed by antigen affinity chromatography using the immunizing peptide.
Shipping Instructions	Refrigerated
Predicted Species	Human, Mouse, Rat, Dog
Reactive Species	Human, Mouse, Rat
Human Gene ID	10417
Mouse Gene ID	100689
Rat Gene ID	171569
Product Grade	https://prod-vector-labs-pimcore-assets.s3.us-east-1.amazonaws.com/assets/products/image/elite_medium.png
IHC Results	Paraffin embedded Human Tonsil. Recommended concentration: 5µg/ml.
ELISA	
Detection Limit	Antibody detection limit dilution 1:16000.
Western Blot	Approx 35-36kDa band observed in Human, Mouse and Rat Kidney lysates, and in preliminary testing of A549 cell lysates (calculated MW of 35.8kDa according to Human NP_036577.2, and 36.0kDa according to Mouse NP_598664.3 and Rat NP_612542.1). Recommended concentration: 0.5-2µg/ml. Primary incubation 1 hour at room temperature.
Application Type	Pep-ELISA, WB, IHC

DOCUMENTS

- [Data Sheet](#)

GALLERY IMAGES

