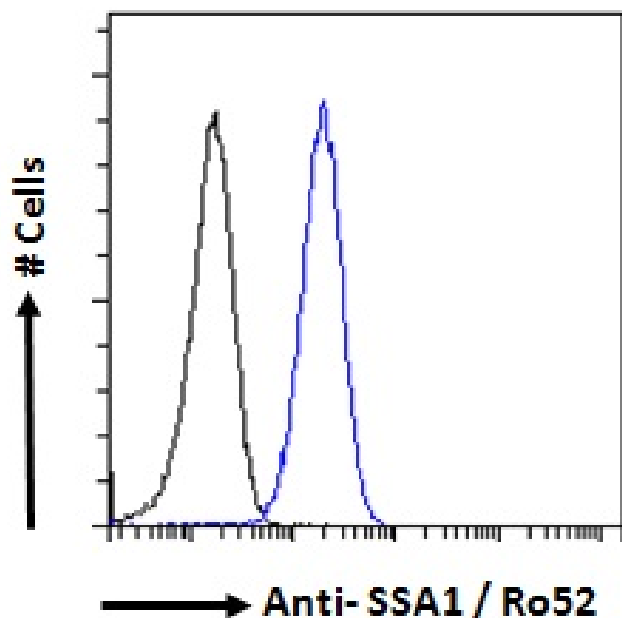


# GOAT ANTI-SSA1 / RO52 ANTIBODY

SKU: EB05901



## SPECIFICATIONS

**Formulation** Supplied at 0.5 mg/ml in Tris saline, 0.02% sodium azide, pH7.3 with 0.5% bovine serum albumin.

**Unit Size** 100 µg

**Storage Instructions** Aliquot and store at -20°C. Minimize freezing and thawing.

**Synonym / Alias Names** tripartite motif protein 21|tripartite motif protein TRIM21|Sjogren syndrome antigen A1 (52kDa, ribonucleoprotein autoantigen SS-A/Ro)|Sjogren syndrome antigen A1 (52kD, ribonucleoprotein autoantigen SS-A/Ro)|Sicca syndrome antigen A|52kDa ribonucleoprotein autoantigen SS-A/Ro|52kD Ro/SSA autoantigen|RNF81, RO52, SSA, SSA1|tripartite motif-containing 21|TRIM21

**Usage Summary** **Immunofluorescence:** Strong expression of the protein seen in the nuclei and cytoplasm of U2OS cells. Recommended concentration: 10µg/ml. **Flow Cytometry:** Flow cytometric analysis of HeLa cells. Recommended concentration: 10ug/ml. **Additional validation:** This antibody has been successfully used in the following paper: Sikorski et al. (2018) PMID: 30377371.

**Accession ID** NP\_003132.2

**Blocking Peptide** EBP05901

**Immunogen** Peptide with sequence CPLNIGSQGSTDY, from the C Terminus of the protein sequence according to NP\_003132.2.

<b>Peptide Sequence</b>	CPLNIGSQGSTDY
<b>Purification Method</b>	Purified from goat serum by ammonium sulphate precipitation followed by antigen affinity chromatography using the immunizing peptide.
<b>Shipping Instructions</b>	Refrigerated
<b>Predicted Species</b>	Human
<b>Reactive Species</b>	Human
<b>Human Gene ID</b>	6737
<b>Product Grade</b>	<a href="https://prod-vector-labs-pimcore-assets.s3.us-east-1.amazonaws.com/assets/products/image/elite_plus_medium.png">https://prod-vector-labs-pimcore-assets.s3.us-east-1.amazonaws.com/assets/products/image/elite_plus_medium.png</a>
<b>ELISA Detection Limit</b>	Antibody detection limit dilution 1:16000.
<b>Western Blot</b>	In transfected HEK293 transiently expressing full-length Human TRIM21 (myc and DYKDDDDK tagged), a band of approx. 60kDa was observed. No bands were observed in mock-transfected HEK293 and the same band was observed using anti-myc tag antibody. Recommended concentration: 0.2-1µg/ml. Primary incubations were for 1 hour.
<b>Application Type</b>	Pep-ELISA, WB-Trf, IF, FC

## SELECTED REFERENCES

[{"pmid": 30377371, "intro": "**This antibody has been successfully used in the following paper:**", "title": "A high-throughput pipeline for validation of antibodies", "author": "Krzysztof Sikorski, Adi Mehta, Marit Inngjerdigen, Flourina Thakor, Simon Kling, Tomas Kalina, Tuula A. Nyman, Maria Ekman Stensland, Wei Zhou, Gustavo A. De Souza, Lars Holden, Jan Stuchly, Markus Templin and Fridtjof Lund-Johansen", "journal": "Nat Methods. 2018 Nov;15(11):909-912"}]

## DOCUMENTS

- [Data Sheet](#)

## GALLERY IMAGES

