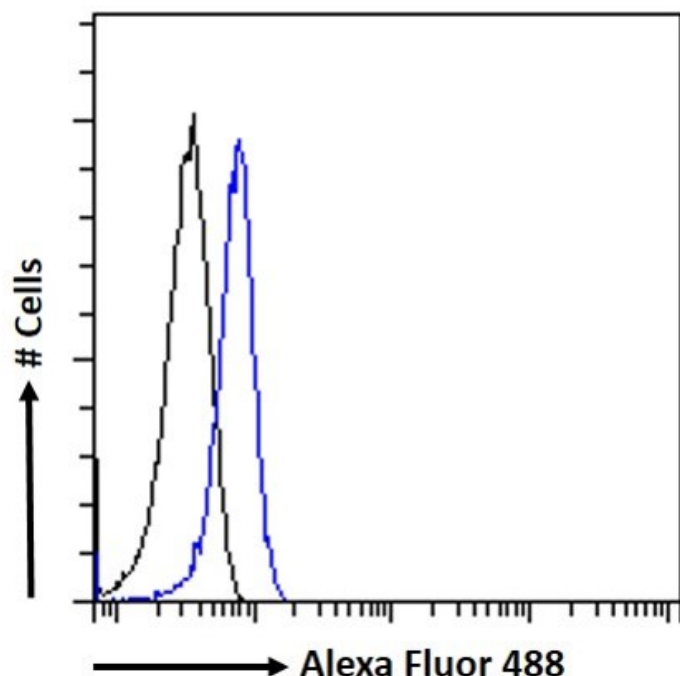


GOAT ANTI-STAM2 ANTIBODY

SKU: EB07213



SPECIFICATIONS

Formulation Supplied at 0.5 mg/ml in Tris saline, 0.02% sodium azide, pH7.3 with 0.5% bovine serum albumin.

Unit Size 100 µg

Storage Instructions Aliquot and store at -20°C. Minimize freezing and thawing.

Synonym / Alias Names signal transducing adaptor molecule 2|STAM-like protein containing SH3 and ITAM domains
2|STAM2B|STAM2A|Hbp|DKFZp564C047|HGNC:11358|signal transducing adaptor molecule (SH3 domain and ITAM motif) 2|STAM2

Usage Summary **Flow Cytometry:** Flow cytometric analysis of K562 and HeLa cells. Recommended concentration: 10ug/ml.

Accession ID NP_005834.3

Blocking Peptide EBP07213

Immunogen Peptide with sequence C-QSIDPTDSKPDSDQD, from the internal region of the protein sequence according to NP_005834.3.

Product Comments	No cross-reaction expected with STAM1.
Peptide Sequence	C-QSIDPTDSKPDSQD
Purification Method	Purified from goat serum by ammonium sulphate precipitation followed by antigen affinity chromatography using the immunizing peptide.
Shipping Instructions	Refrigerated
Predicted Species	Human, Mouse, Dog, Cow
Reactive Species	Human
Human Gene ID	10254
Mouse Gene ID	56324
Product Grade	https://prod-vector-labs-pimcore-assets.s3.us-east-1.amazonaws.com/assets/products/image/elite_medium.png
ELISA Detection Limit	Antibody detection limit dilution 1:8000.
Western Blot	Approx 70kDa band observed in Human Spleen lysates and in preliminary testing of HeLa cell lysate (calculated MW of 58.2kDa according to NP_005834.3). This molecular weight is routinely observed by other sources. Recommended concentration: 1-3µg/ml.. Primary incubation 1 hour at room temperature.
Application Type	Pep-ELISA, WB, FC

DOCUMENTS

- [Data Sheet](#)

GALLERY IMAGES

