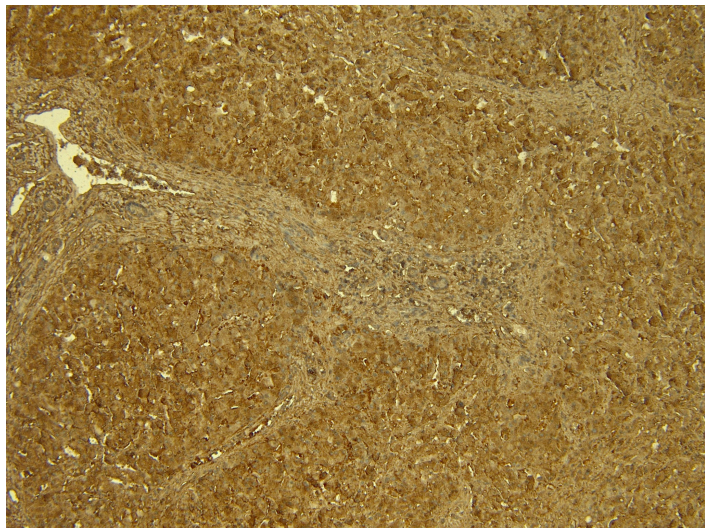


GOAT ANTI-STAT3 (ISOFORM 1 AND 2) ANTIBODY

SKU: EB05073



SPECIFICATIONS

Formulation	Supplied at 0.5 mg/ml in Tris saline, 0.02% sodium azide, pH7.3 with 0.5% bovine serum albumin.
Unit Size	100 µg
Storage Instructions	Aliquot and store at -20°C. Minimize freezing and thawing.
Synonym / Alias Names	HIES MGC16063 FLJ20882 acute-phase response factor DNA-binding protein APRF APRF signal transducer and activator of transcription 3 (acute-phase response factor) STAT3
Usage Summary	<p>Immunofluorescence: Strong expression of the protein seen in the Golgi and cytoplasm of HeLa and A431 cells. Recommen</p> <p>Flow Cytometry: Flow cytometric analysis of A431 cells..</p> <p>Recommended concentration: 10ug/ml.</p>ded concentration: 10µg/ml.</p>
Accession ID	NP_003141.2; NP_644805.1
Blocking Peptide	EBP05073
Immunogen	Peptide with sequence DMELTSECATSPM, from the C Terminus of the protein sequence according to NP_003141.2; NP_644805.1.
Product Comments	This antibody is expected to recognise isoforms 1 and 2 (as represented by NP_644805.1 and NP_003141.2 respectively)
Peptide Sequence	DMELTSECATSPM

Purification Method	Purified from goat serum by ammonium sulphate precipitation followed by antigen affinity chromatography using the immunizing peptide.
Shipping Instructions	Refrigerated
Predicted Species	Human, Mouse, Rat, Cow
Reactive Species	Human
Human Gene ID	6774
Mouse Gene ID	20848
Rat Gene ID	25125
Product Grade	https://prod-vector-labs-pimcore-assets.s3.us-east-1.amazonaws.com/assets/products/image/elite_plus_medium.png
IHC Results	Paraffin embedded Human Liver. Recommended concentration: 6-7µg/ml.
ELISA	
Detection Limit	Antibody detection limit dilution 1:16000.
Application Type	Pep-ELISA, IHC, IF, FC

DOCUMENTS

- [Data Sheet](#)

GALLERY IMAGES

