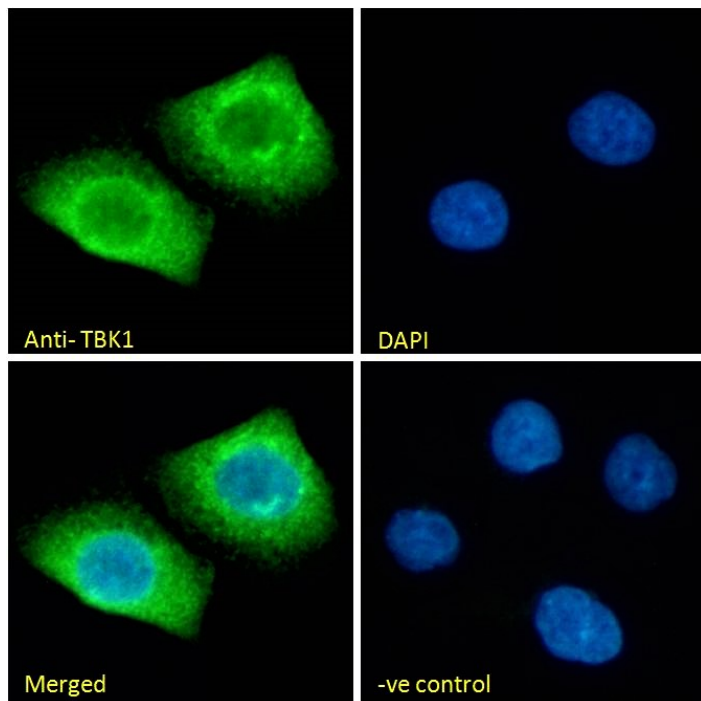


GOAT ANTI-TBK1 (AA514-527) ANTIBODY

SKU: EB11055



SPECIFICATIONS

Formulation Supplied at 0.5 mg/ml in Tris saline, 0.02% sodium azide, pH7.3 with 0.5% bovine serum albumin.

Unit Size 100 µg

Storage Instructions Aliquot and store at -20°C. Minimize freezing and thawing.

Synonym / Alias Names TBK1| TANK-binding kinase 1| T2K| serine/threonine-protein kinase TBK1| NF-kB-activating kinase| NF-kappa-B-activating kinase| NAK| FLJ11330

Usage Summary **Immunofluorescence:** Strong expression of the protein seen in the cytoplasm of A431 and in the cytoplasm and ER of HeLa cells. Recommended concentration: 10µg/ml. **Flow Cytometry:** Flow cytometric analysis of HeLa cells. Recommended concentration: 10ug/ml.

Accession ID NP_037386.1

Blocking Peptide EBP11055

Immunogen	Peptide with sequence C-TIETSLQDIDSRLS, from the internal region of the protein sequence according to NP_037386.1.
Peptide Sequence	C-TIETSLQDIDSRLS
Purification Method	Purified from goat serum by ammonium sulphate precipitation followed by antigen affinity chromatography using the immunizing peptide.
Shipping Instructions	Refrigerated
Predicted Species	Human
Reactive Species	Human
Human Gene ID	29110
Product Grade	https://prod-vector-labs-pimcore-assets.s3.us-east-1.amazonaws.com/assets/products/image/elite_medium.png
ELISA Detection Limit	Antibody detection limit dilution 1:32000.
Western Blot	Approx 80kDa band observed in lysates of cell line LNCaP and A431 (calculated MW of 83.6kDa according to NP_037386.1). Recommended concentration: 0.5-1µg/ml. Primary incubation 1 hour at room temperature.
Application Type	Pep-ELISA, WB, IF, FC

SELECTED REFERENCES

[{"pmid": 30377371, "intro": "**This antibody has been successfully used in the following paper:**", "title": "A high-throughput pipeline for validation of antibodies", "author": "Krzysztof Sikorski, Adi Mehta, Marit Inngjerdigen, Flourina Thakor, Simon Kling, Tomas Kalina, Tuula A. Nyman, Maria Ekman Stensland, Wei Zhou, Gustavo A. De Souza, Lars Holden, Jan Stuchly, Markus Templin and Fridtjof Lund-Johansen", "journal": "Nat Methods. 2018 Nov;15(11):909-912"}]

DOCUMENTS

- [Data Sheet](#)

GALLERY IMAGES

