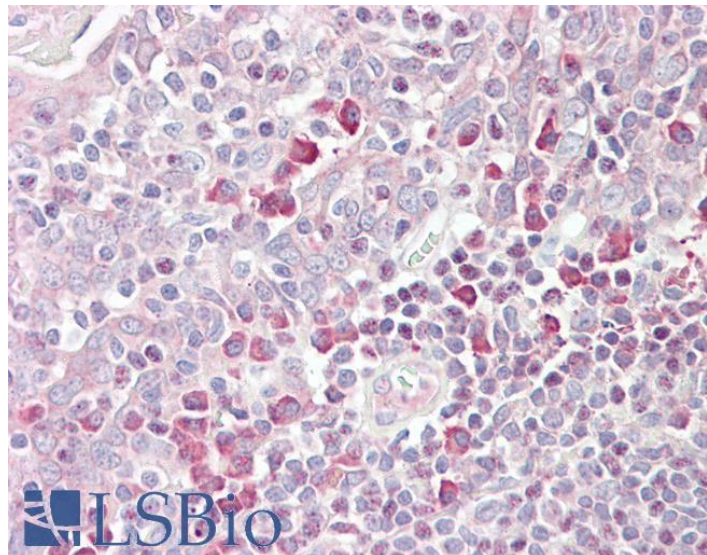


GOAT ANTI-TEB4 / MARCH-VI (AA 886 TO 898) ANTIBODY

SKU: EB08158



SPECIFICATIONS

Formulation Supplied at 0.5 mg/ml in Tris saline, 0.02% sodium azide, pH7.3 with 0.5% bovine serum albumin.

Unit Size 100 µg

Storage Instructions Aliquot and store at -20°C. Minimize freezing and thawing.

Synonym / Alias Names MARCH6|membrane-associated ring finger (C3HC4) 6|KIAA0597|MARCH-VI|RN176|TEB4|membrane-associated RING-CH protein VI

Accession ID NP_005876.2

Blocking Peptide EBP08158

Immunogen Peptide with sequence C-QRLVNYERKSGKQ, from the internal region of the protein sequence according to NP_005876.2.

Peptide Sequence C-QRLVNYERKSGKQ

Purification Method Purified from goat serum by ammonium sulphate precipitation followed by antigen affinity chromatography using the immunizing peptide.

| | |
|------------------------------|---|
| Shipping Instructions | Refrigerated |
| Predicted Species | Human, Mouse |
| Reactive Species | Human |
| Human Gene ID | 10299 |
| Mouse Gene ID | 223455 |
| Product Grade | https://prod-vector-labs-pimcore-assets.s3.us-east-1.amazonaws.com/assets/products/image/elite_medium.png |
| IHC Results | Paraffin embedded Human Tonsil. Recommended concentration: 3.75µg/ml. |
| ELISA | |
| Detection Limit | Antibody detection limit dilution 1:16000. |
| Western Blot | Preliminary experiments in human kidney, thymus and ovary lysates gave no specific signal but low background (at antibody concentration up to 1µg/ml). |
| Application Type | Pep-ELISA, IHC |

DOCUMENTS

- [Data Sheet](#)

GALLERY IMAGES

