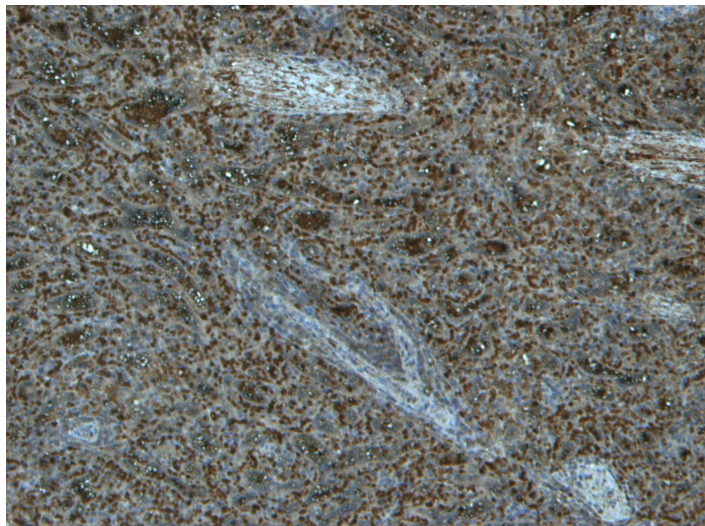


# GOAT ANTI-TLR4 / CD284 ANTIBODY

**SKU:** EB09441



## SPECIFICATIONS

|                              |  |
|------------------------------|--|
| <b>Formulation</b>           | Supplied at 0.5 mg/ml in Tris saline, 0.02% sodium azide, pH7.3 with 0.5% bovine serum albumin.  |
| <b>Unit Size</b>             | 100 µg   |
| <b>Storage Instructions</b>  | Aliquot and store at -20°C. Minimize freezing and thawing.   |
| <b>Synonym / Alias Names</b> | homolog of Drosophila toll OTTHUMP00000022807 hToll TOLL CD284 ARMD10 toll-like receptor 4 TLR4  |
| <b>Usage Summary</b>         | <strong>Immunofluorescence:</strong> Strong expression of the protein seen in the cytoplasm of NIH3T3 cells and membrane and cytoplasm of THP-1 cells. Recommended concentration: 10µg/ml <strong>Flow Cytometry:</strong> Flow cytometric analysis of U937 cells. Recommended concentration: 10ug/ml. |
| <b>Accession ID</b>          | NP_612564.1  |
| <b>Blocking Peptide</b>      | EBP09441   |
| <b>Immunogen</b>             | Peptide with sequence C-YSSQDEDWVRNE, from the Internal region of the protein sequence according to NP_612564.1.   |
| <b>Peptide Sequence</b>      | C-YSSQDEDWVRNE   |
| <b>Purification Method</b>   | Purified from goat serum by ammonium sulphate precipitation followed by antigen affinity chromatography using the immunizing peptide.  |

|                              |   |
|------------------------------|---|
| <b>Shipping Instructions</b> | Refrigerated  |
| <b>Predicted Species</b>     | Human, Mouse, Rat   |
| <b>Reactive Species</b>      | Human, Mouse  |
| <b>Human Gene ID</b>         | 7099  |
| <b>Mouse Gene ID</b>         | 21898   |
| <b>Rat Gene ID</b>           | 29260   |
| <b>Product Grade</b>         | <a href="https://prod-vector-labs-pimcore-assets.s3.us-east-1.amazonaws.com/assets/products/image/elite_plus_medium.png">https://prod-vector-labs-pimcore-assets.s3.us-east-1.amazonaws.com/assets/products/image/elite_plus_medium.png</a> |
| <b>IHC Results</b>           | Paraffin embedded Human Spleen. Recommended concentration: 5-6µg/ml.  |
| <b>ELISA</b>                 |   |
| <b>Detection Limit</b>       | Antibody detection limit dilution 1:16000.  |
| <b>Application Type</b>      | Pep-ELISA, IF, IHC, FC  |

## GALLERY IMAGES

