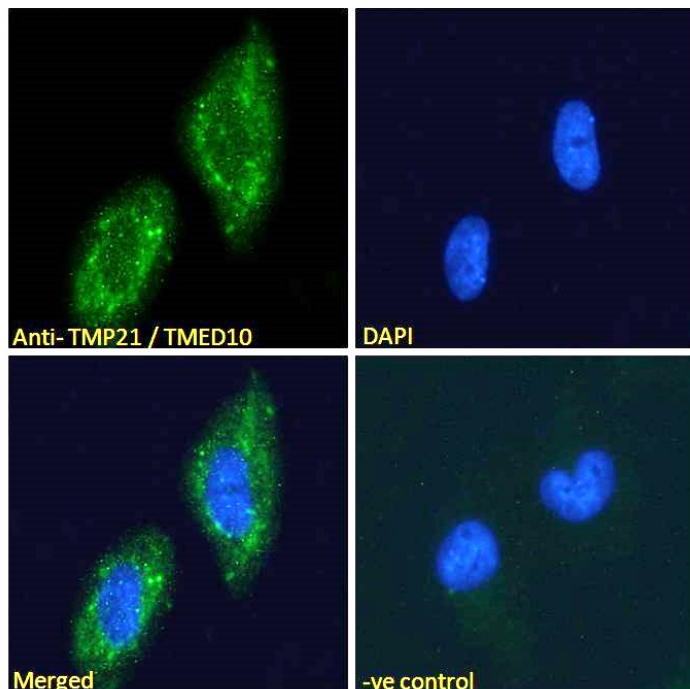


## GOAT ANTI-TMP21 / TMED10 ANTIBODY

SKU: EB07636



## SPECIFICATIONS

**Formulation** Supplied at 0.5 mg/ml in Tris saline, 0.02% sodium azide, pH7.3 with 0.5% bovine serum albumin.

**Unit Size** 100 µg

**Storage Instructions** Aliquot and store at -20°C. Minimize freezing and thawing.

**Synonym /** TMED10|transmembrane emp24-like trafficking protein 10

**Alias** (yeast)|P24(DELTA)|S31I125|S31III125|TMP21|Tnp-21-I|21 kDa transmembrane trafficking

**Names** protein|transmembrane emp24 domain-containing protein 10

**Usage Summary** **Immunofluorescence:** Expression of the protein seen in the Golgi and cytoplasm of Glioblastoma U251 cells. Recommended concentration: 10µg/ml. **Flow Cytometry:** Flow cytometric analysis of HeLa cells. Recommended concentration: 10ug/ml.

**Accession ID** NP\_006818.3

**Blocking Peptide** EBP07636

<b>Immunogen</b>	Peptide with sequence C-YLRRFFKAKKLIE, from the C Terminus of the protein sequence according to NP_006818.3.
<b>Peptide Sequence</b>	C-YLRRFFKAKKLIE
<b>Purification Method</b>	Purified from goat serum by ammonium sulphate precipitation followed by antigen affinity chromatography using the immunizing peptide.
<b>Shipping Instructions</b>	Refrigerated
<b>Predicted Species</b>	Human, Mouse, Rat, Dog, Cow
<b>Reactive Species</b>	Human
<b>Human Gene ID</b>	10972
<b>Mouse Gene ID</b>	68581
<b>Rat Gene ID</b>	84599
<b>Product Grade</b>	<a href="https://prod-vector-labs-pimcore-assets.s3.us-east-1.amazonaws.com/assets/products/image/elite_medium.png">https://prod-vector-labs-pimcore-assets.s3.us-east-1.amazonaws.com/assets/products/image/elite_medium.png</a>
<b>ELISA Detection Limit</b>	Antibody detection limit dilution 1:1000.
<b>Western Blot</b>	Preliminary experiments gave an approx 75kDa band in Rat Pancreas lysates after 1µg/ml antibody staining. Please note that currently we cannot find an explanation in the literature for the band we observe given the calculated size of 25.0kDa according to NP_006818.3. The 75kDa band was successfully blocked by incubation with the immunizing peptide. Primary incubation 1 hour at room temperature.
<b>Application Type</b>	Pep-ELISA, IF, FC

## DOCUMENTS

- [Data Sheet](#)

## GALLERY IMAGES

