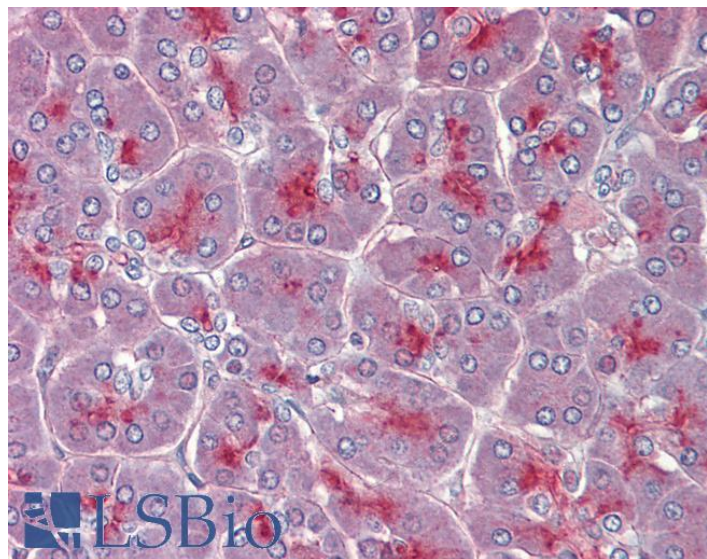


GOAT ANTI-TPCN2 ANTIBODY

SKU: EB09610



SPECIFICATIONS

Formulation Supplied at 0.5 mg/ml in Tris saline, 0.02% sodium azide, pH7.3 with 0.5% bovine serum albumin.

Unit Size 100 µg

Storage Instructions Aliquot and store at -20°C. Minimize freezing and thawing.

Synonym /

Alias Names two-pore calcium channel protein 2|TPC2|SHEP10|FLJ41094|two pore segment channel 2|TPCN2

Accession ID NP_620714.2

Blocking Peptide EBP09610

Immunogen Peptide with sequence C-EDELTERLSQHPPH, from the C Terminus of the protein sequence according to NP_620714.2.

Peptide Sequence C-EDELTERLSQHPPH

Purification Method Purified from goat serum by ammonium sulphate precipitation followed by antigen affinity chromatography using the immunizing peptide.

Shipping Instructions Refrigerated

Predicted Species	Human
Reactive Species	Human
Human Gene ID	219931
Product Grade	https://prod-vector-labs-pimcore-assets.s3.us-east-1.amazonaws.com/assets/products/image/elite_medium.png
IHC Results	Paraffin embedded Human Pancreas and Colon. Recommended concentration: 3.75µg/ml.
ELISA	
Detection Limit	Antibody detection limit dilution 1:16000.
Western Blot	Preliminary experiments gave an approx 30kDa band in Human Brain (Cerebral Cortex), Kidney and Liver lysates after 0.5µg/ml antibody staining. Please note that currently we cannot find an explanation in the literature for the band we observe given the calculated size of 85.2kDa according to NP_620714.2. The 30kDa band was successfully blocked by incubation with the immunizing peptide.
Application Type	Pep-ELISA, IHC

DOCUMENTS

- [Data Sheet](#)

GALLERY IMAGES

