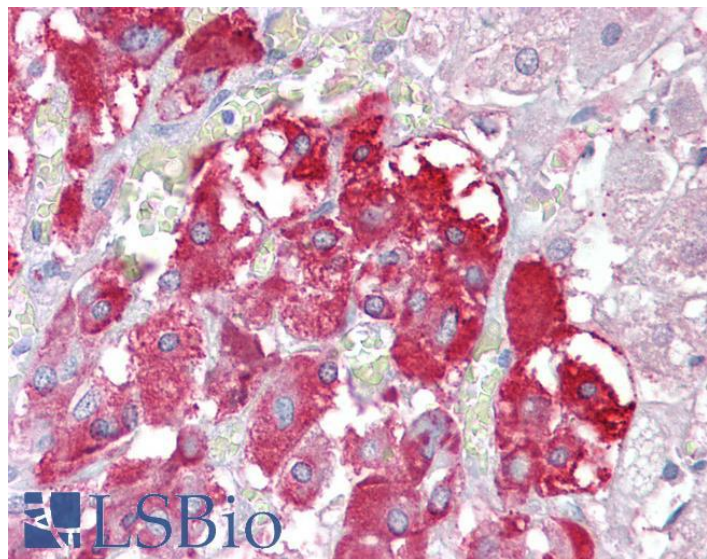


GOAT ANTI-TPTE / PTEN2 ANTIBODY

SKU: EB07380



SPECIFICATIONS

Formulation Supplied at 0.5 mg/ml in Tris saline, 0.02% sodium azide, pH7.3 with 0.5% bovine serum albumin.

Unit Size 100 µg

Storage Instructions Aliquot and store at -20°C. Minimize freezing and thawing.

Synonym /

Alias Names TPTE|PTEN2|transmembrane phosphatase with tensin homology|tensin, putative protein-tyrosine phosphatase

Accession ID NP_954870.2; NP_954868.1; NP_954869.1

Blocking Peptide EBP07380

Immunogen Peptide with sequence C-ERRTDKTHSEKFQ, from the internal region of the protein sequence according to NP_954870.2; NP_954868.1; NP_954869.1.

Product Comments This antibody is expected to recognise all reported isoforms (NP_954870.2, NP_954868.1 and NP_954869.1). It may cross-react with the almost identical TPTE2 (GeneID 93492; NP_570141.2, NP_954864.1, NP_954863.1).

Peptide Sequence C-ERRTDKTHSEKFQ

Purification Method Purified from goat serum by ammonium sulphate precipitation followed by antigen affinity chromatography using the immunizing peptide.

Shipping Instructions	Refrigerated
Predicted Species	Human
Reactive Species	Human
Human Gene ID	7179
Product Grade	https://prod-vector-labs-pimcore-assets.s3.us-east-1.amazonaws.com/assets/products/image/elite_medium.png
IHC Results	Paraffin embedded Human Adrenal Gland. Recommended concentration: 2.5µg/ml.
ELISA	
Detection Limit	Antibody detection limit dilution 1:16000.
Western Blot	Approx 50-55kDa band observed in Human Testis lysates (calculated MW of 60.2kDa according to NP_954869.1). Recommended concentration: 1-3µg/ml.
Application Type	Pep-ELISA, WB, IHC

DOCUMENTS

- [Data Sheet](#)

GALLERY IMAGES

