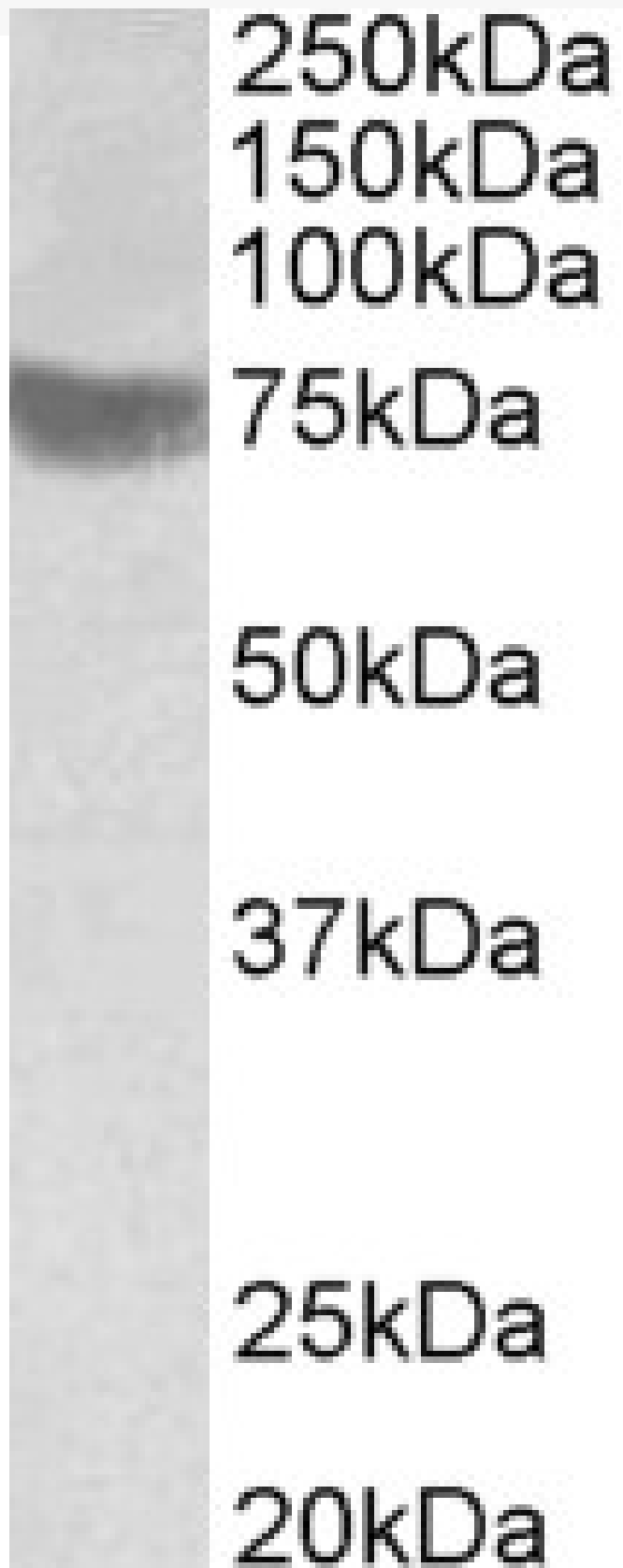


# GOAT ANTI-TRC8 ANTIBODY

**SKU:** EB05902



## SPECIFICATIONS

**Formulation** Supplied at 0.5 mg/ml in Tris saline, 0.02% sodium azide, pH7.3 with 0.5% bovine serum albumin.

**Unit Size** 100 µg

**Storage Instructions** Aliquot and store at -20°C. Minimize freezing and thawing.

**Synonym / Alias Names** multiple membrane spanning receptor TRC8|patched related protein translocated in renal cancer|RCA1|MGC31961|HRCA1|TRC8|ring finger protein 139|RNFI39

**Accession ID** NP\_009149.2

**Blocking Peptide** EBP05902

**Immunogen** Peptide with sequence C-HTGAAAEFNDT, from the C Terminus of the protein sequence according to NP\_009149.2.

**Peptide Sequence** C-HTGAAAEFNDT

**Purification Method** Purified from goat serum by ammonium sulphate precipitation followed by antigen affinity chromatography using the immunizing peptide.

**Shipping Instructions** Refrigerated

**Predicted Species** Human, Dog

**Reactive Species** Human

**Human Gene ID** 11236

**Product Grade** [https://prod-vector-labs-pimcore-assets.s3.us-east-1.amazonaws.com/assets/products/image/elite\\_medium.png](https://prod-vector-labs-pimcore-assets.s3.us-east-1.amazonaws.com/assets/products/image/elite_medium.png)

**IHC Results** In paraffin embedded Human Placenta shows membranous staining in the cytotrophoblasts. Recommended concentration, 3-4µg/ml.

**ELISA Detection Limit** Antibody detection limit dilution 1:16000.

**Western Blot** Approx 75kDa band observed in Human Skeletal Muscle lysates (calculated MW of 76.0kDa according to NP\_009149.2). Recommended concentration: 0.3-1µg/ml.

**Application Type** Pep-ELISA, WB, IHC

## DOCUMENTS

- [Data Sheet](#)

## GALLERY IMAGES

