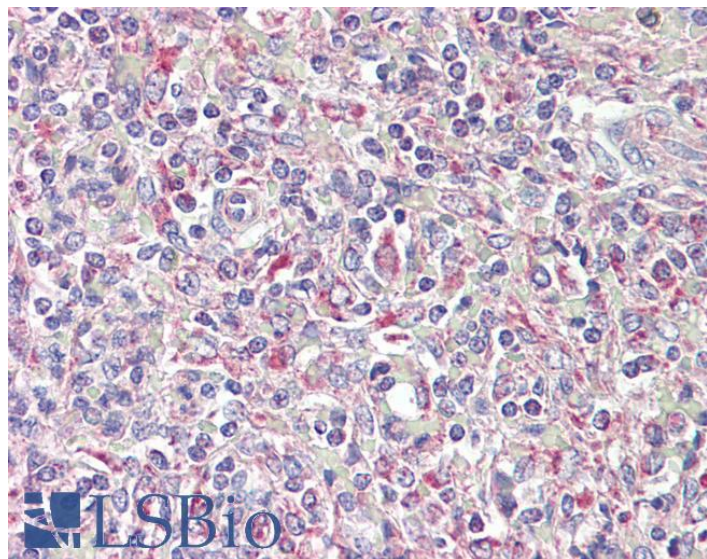


# GOAT ANTI-TRIB1 ANTIBODY

**SKU:** EB08483



## SPECIFICATIONS

**Formulation** Supplied at 0.5 mg/ml in Tris saline, 0.02% sodium azide, pH7.3 with 0.5% bovine serum albumin.

**Unit Size** 100 µg

**Storage Instructions** Aliquot and store at -20°C. Minimize freezing and thawing.

**Synonym / Alias Names** phosphoprotein regulated by mitogenic pathways|G-protein-coupled receptor induced protein|GIG2N: SKIP1|C8FW|tribbles homolog 1 (Drosophila)|TRIB1

**Accession ID** NP\_079471.1

**Blocking Peptide** EBP08483

**Immunogen** Peptide with sequence C-TSDQIVPEYQEDSD, from the C Terminus of the protein sequence according to NP\_079471.1 .

**Peptide Sequence** C-TSDQIVPEYQEDSD

**Purification Method** Purified from goat serum by ammonium sulphate precipitation followed by antigen affinity chromatography using the immunizing peptide.

**Shipping Instructions** Refrigerated

<b>Predicted Species</b>	Human, Mouse, Cow
<b>Reactive Species</b>	Human
<b>Human Gene ID</b>	10221
<b>Product Grade</b>	<a href="https://prod-vector-labs-pimcore-assets.s3.us-east-1.amazonaws.com/assets/products/image/elite_medium.png">https://prod-vector-labs-pimcore-assets.s3.us-east-1.amazonaws.com/assets/products/image/elite_medium.png</a>
<b>IHC Results</b>	Paraffin embedded Human Spleen. Recommended concentration: 3.75µg/ml.
<b>ELISA Detection Limit</b>	Antibody detection limit dilution 1:8000.
<b>Western Blot</b>	Preliminary experiments gave an approx 35kDa band in Human Lymph Node and Peripheral Blood Mononucleocyte lysates after 0.3µg/ml antibody staining. Please note that currently we cannot find an explanation in the literature for the band we observe given the calculated size of 41.0kDa according to NP_079471.1. The 35kDa band was successfully blocked by incubation with the immunizing peptide.
<b>Application Type</b>	Pep-ELISA, IHC

## DOCUMENTS

- [Data Sheet](#)

## GALLERY IMAGES

