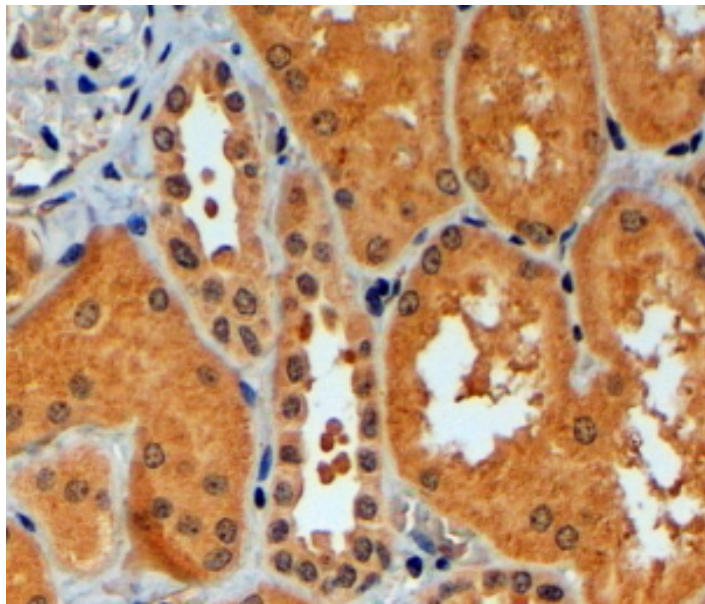


# GOAT ANTI-TRIM11 ANTIBODY

**SKU:** EB05908



## SPECIFICATIONS

**Formulation** Supplied at 0.5 mg/ml in Tris saline, 0.02% sodium azide, pH7.3 with 0.5% bovine serum albumin.

**Unit Size** 100 µg

**Storage Instructions** Aliquot and store at -20°C. Minimize freezing and thawing.

**Synonym /**

**Alias** tripartite motif-containing 11|RNF92|BIA1|TRIM11

**Names**

**Accession ID** NP\_660215.1

**Blocking Peptide** EBP05908

**Immunogen** Peptide with sequence CRPKGGSGDTLAPQ, from the C Terminus of the protein sequence according to NP\_660215.1.

**Peptide Sequence** CRPKGGSGDTLAPQ

**Purification Method** Purified from goat serum by ammonium sulphate precipitation followed by antigen affinity chromatography using the immunizing peptide.

|                              |                                                                                                                                                                                                                                   |
|------------------------------|-----------------------------------------------------------------------------------------------------------------------------------------------------------------------------------------------------------------------------------|
| <b>Shipping Instructions</b> | Refrigerated                                                                                                                                                                                                                      |
| <b>Predicted Species</b>     | Human                                                                                                                                                                                                                             |
| <b>Reactive Species</b>      | Human                                                                                                                                                                                                                             |
| <b>Human Gene ID</b>         | 81559                                                                                                                                                                                                                             |
| <b>Product Grade</b>         | <a href="https://prod-vector-labs-pimcore-assets.s3.us-east-1.amazonaws.com/assets/products/image/elite_medium.png">https://prod-vector-labs-pimcore-assets.s3.us-east-1.amazonaws.com/assets/products/image/elite_medium.png</a> |
| <b>IHC Results</b>           | In paraffin embedded Human Kidney shows cytoplasm staining preferentially in PCT over DCT. Recommended concentration, 4-6µg/ml.                                                                                                   |
| <b>ELISA</b>                 |                                                                                                                                                                                                                                   |
| <b>Detection Limit</b>       | Antibody detection limit dilution 1:32000.                                                                                                                                                                                        |
| <b>Application Type</b>      | Pep-ELISA, IHC                                                                                                                                                                                                                    |

## DOCUMENTS

- [Data Sheet](#)

## GALLERY IMAGES

