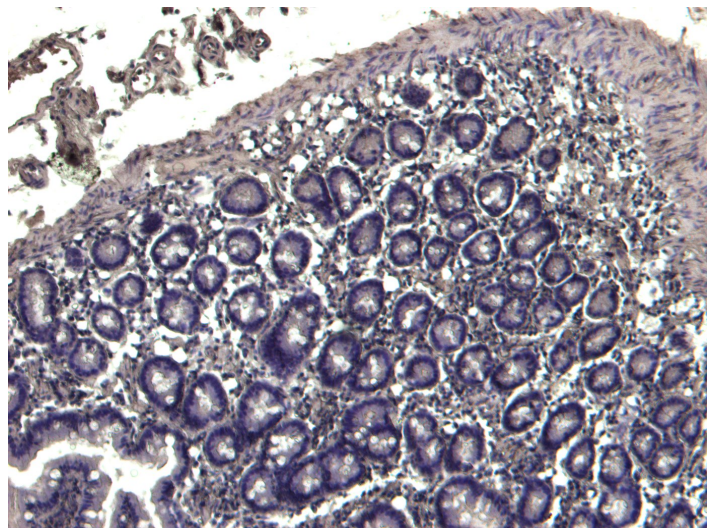


GOAT ANTI-TRIM5 / RNF88 ANTIBODY

SKU: EB05932



SPECIFICATIONS

Formulation	Supplied at 0.5 mg/ml in Tris saline, 0.02% sodium azide, pH7.3 with 0.5% bovine serum albumin.
Unit Size	100 µg
Storage Instructions	Aliquot and store at -20°C. Minimize freezing and thawing.
Synonym / Alias Names	tripartite motif-containing protein 5 alpha tripartite motif protein TRIM OTTHUMP0000069812 tripartite motif protein TRIM5 tripartite motif protein 5 TRIM5alpha tripartite motif-containing 5 RNF88 TRIM5
Accession ID	NP_149023.1; NP_149083.1; NP_149084.1
Blocking Peptide	EBP05932
Immunogen	Peptide with sequence ASGILVNVKEEVTC, from the N Terminus of the protein sequence according to NP_149023.1; NP_149083.1; NP_149084.1.
Product Comments	This antibody is expected to recognise all three human isoforms of this protein.
Peptide Sequence	ASGILVNVKEEVTC
Purification Method	Purified from goat serum by ammonium sulphate precipitation followed by antigen affinity chromatography using the immunizing peptide.

Shipping Instructions	Refrigerated
Predicted Species	Human
Reactive Species	Human
Human Gene ID	85363
Product Grade	https://prod-vector-labs-pimcore-assets.s3.us-east-1.amazonaws.com/assets/products/image/elite_medium.png
IHC Results	Paraffin embedded Human Colon. Recommended concentration: 3µg/ml.
ELISA	
Detection Limit	Antibody detection limit dilution 1:16000.
Western Blot	Approx 55 and 37kDa bands observed in Human Thymus lysates (calculated MW of 56.3kDa according to NP_149023.1 and of 37.7kDa according to NP_149084.1). Recommended concentration: 1-3µg/ml. Primary incubation was 1 hour.
Application Type	Pep-ELISA, WB, IHC

DOCUMENTS

- [Data Sheet](#)

GALLERY IMAGES

