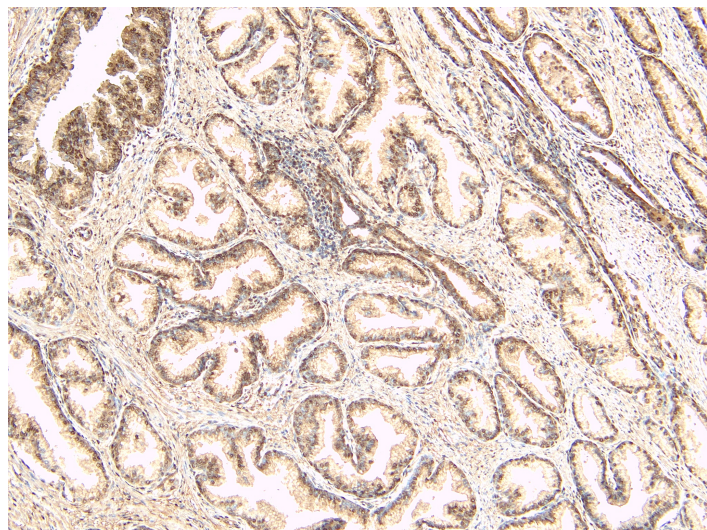


GOAT ANTI-TUSC3 / N33 ANTIBODY

SKU: EB08380



SPECIFICATIONS

Formulation Supplied at 0.5 mg/ml in Tris saline, 0.02% sodium azide, pH7.3 with 0.5% bovine serum albumin.

Unit Size 100 µg

Storage Instructions Aliquot and store at -20°C. Minimize freezing and thawing.

Synonym / Alias Names Putative prostate cancer tumor suppressor|OST3A|N33|MGC13453|D8S1992|tumor suppressor candidate 3|TUSC3

Accession ID NP_006756.2; NP_839952.1

Blocking Peptide EBP08380

Immunogen Peptide with sequence PQRQCSVCQRAN, from the internal region of the protein sequence according to NP_006756.2; NP_839952.1.

Product Comments This antibody is expected to recognise both reported isoforms (NP_006756.2; NP_839952.1).

Peptide Sequence PQRQCSVCQRAN

Purification Method Purified from goat serum by ammonium sulphate precipitation followed by antigen affinity chromatography using the immunizing peptide.

Shipping Instructions	Refrigerated
Predicted Species	Human, Mouse, Rat, Cow
Reactive Species	Human
Human Gene ID	7991
Mouse Gene ID	80286
Rat Gene ID	290783
Product Grade	https://prod-vector-labs-pimcore-assets.s3.us-east-1.amazonaws.com/assets/products/image/elite_medium.png
IHC Results	Paraffin embedded Human Prostate. Recommended concentration: 4-8µg/ml.
ELISA	
Detection Limit	Antibody detection limit dilution 1:1000.
Western Blot	Approx 37kDa band observed in Human Liver and Lung lysates (calculated MW of 39.7kDa according to NP_006756.2 and of 39.6 according to NP_839952.1). An additional band of unknown identity was also consistently observed at 22kDa, which was successfully blocked by incubation with the immunising peptide. Recommended concentration: 1-3µg/ml. Primary incubation 1 hour at room temperature.
Application Type	Pep-ELISA, WB, IHC

DOCUMENTS

- [Data Sheet](#)

GALLERY IMAGES

