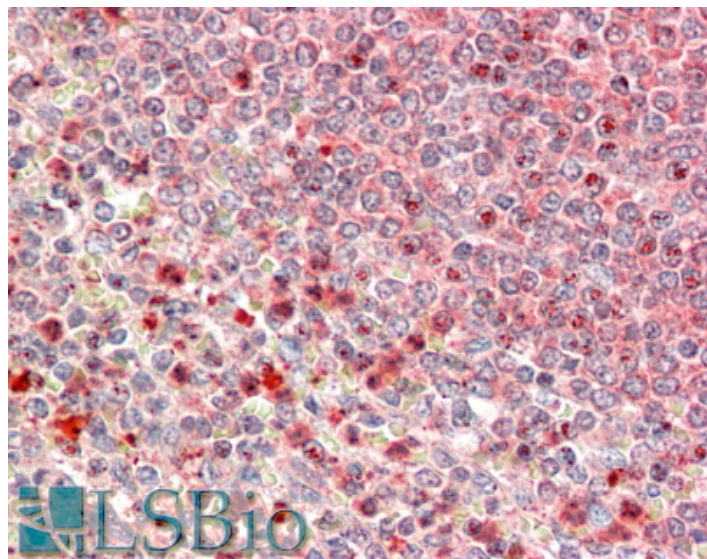


GOAT ANTI-UBR4 / ZUBR1 ANTIBODY

SKU: EB09611



SPECIFICATIONS

Formulation Supplied at 0.5 mg/ml in Tris saline, 0.02% sodium azide, pH7.3 with 0.5% bovine serum albumin.

Unit Size 100 µg

Storage Instructions Aliquot and store at -20°C. Minimize freezing and thawing.

Synonym / Alias Names UBR4|ubiquitin protein ligase E3 component n-recognin 4|FLJ41863|KIAA0462|KIAA1307|RBAF600|ZUBR1|p600|retinoblastoma-associated factor 600|retinoblastoma-associated factor 600-like protein|zinc finger, UBR1 type 1

Accession ID NP_065816.2

Blocking Peptide EBP09611

Immunogen Peptide with sequence C-NTTRATSREEKNLQ, from the C Terminus of the protein sequence according to NP_065816.2.

Peptide Sequence C-NTTRATSREEKNLQ

Purification Method Purified from goat serum by ammonium sulphate precipitation followed by antigen affinity chromatography using the immunizing peptide.

Shipping Instructions Refrigerated

Predicted Species	Human, Mouse, Rat, Dog, Cow
Reactive Species	Human
Human Gene ID	23352
Mouse Gene ID	69116
Rat Gene ID	313658
Product Grade	https://prod-vector-labs-pimcore-assets.s3.us-east-1.amazonaws.com/assets/products/image/elite_medium.png
IHC Results	In paraffin embedded Spleen shows various types of subnuclear staining in select splenocytes and additional membrane plus cytoplasm staining elsewhere. Recommended concentration, 5-10µg/ml.
ELISA Detection Limit	Antibody detection limit dilution 1:128000.
Western Blot	Not yet tested - our routinely used western blotting protocol does not allow detection of proteins as large as the calculated size of 574kDa according to NP_065816.2. Therefore we cannot recommend an optimal concentration and the antibody is an aspiring product. We would appreciate any feedback from people in the field - have any results been reported with other antibodies/lysates? Have any further splice variants/modified forms been reported?
Application Type	Pep-ELISA, IHC

DOCUMENTS

- [Data Sheet](#)

GALLERY IMAGES

