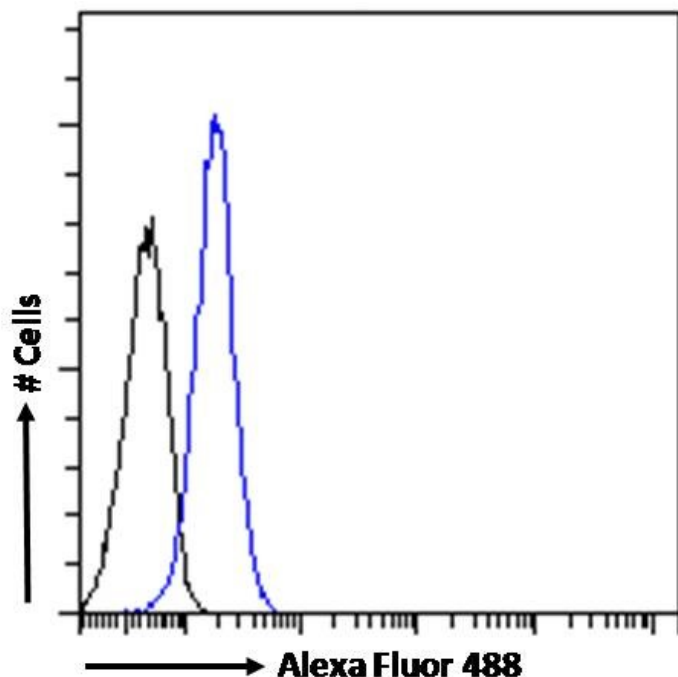


GOAT ANTI-VAV3 ANTIBODY

SKU: EB06467



SPECIFICATIONS

Formulation Supplied at 0.5 mg/ml in Tris saline, 0.02% sodium azide, pH7.3 with 0.5% bovine serum albumin.

Unit Size 100 µg

Storage Instructions Aliquot and store at -20°C. Minimize freezing and thawing.

Synonym /

Alias Names FLJ40431|vav 3 guanine nucleotide exchange factor|vav 3 oncogene|VAV3

Usage Summary **Immunofluorescence:** Strong expression of the protein seen in the cytoplasm of HeLa cells. Recommended concentration: 10µg/ml. **Flow Cytometry:** Flow cytometric analysis of K562 cells. Recommended concentration: 10ug/ml.

Accession ID NP_006104.4; NP_001073343.1

Blocking Peptide EBP06467

Immunogen Peptide with sequence C-SGEQGTKLPEK, from the internal region of the protein sequence according to NP_006104.4; NP_001073343.1.

Product Comments	This antibody is expected to recognize both reported isoforms (NP_006104.4; NP_001073343.1).
Peptide Sequence	C-SGEQGTLKLPEK
Purification Method	Purified from goat serum by ammonium sulphate precipitation followed by antigen affinity chromatography using the immunizing peptide.
Shipping Instructions	Refrigerated
Predicted Species	Human
Reactive Species	Human
Human Gene ID	10451
Product Grade	https://prod-vector-labs-pimcore-assets.s3.us-east-1.amazonaws.com/assets/products/image/elite_plus_medium.png
IHC Results	Paraffin embedded Human Spleen. Recommended concentration: 7.5µg/ml.
ELISA	
Detection Limit	Antibody detection limit dilution 1:32000.
Application Type	Pep-ELISA, IHC, IF, FC

DOCUMENTS

- [Data Sheet](#)

GALLERY IMAGES

