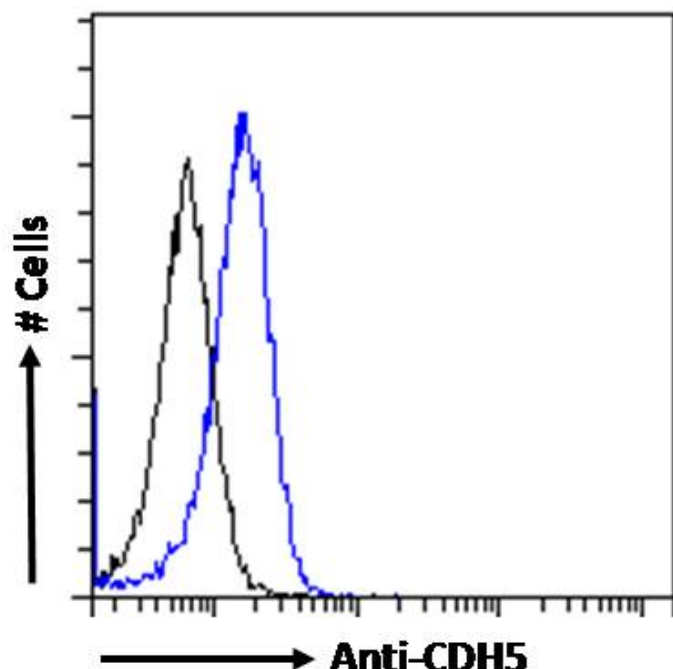


GOAT ANTI-VE-CADHERIN (AA537-549) ANTIBODY

SKU: EB12666



SPECIFICATIONS

Unit Size	100 µg
Synonym / Alias	CDH5 cadherin 5, type 2 (vascular endothelium) 7B4 CD144 7B4 antigen VE-cadherin cadherin 5, type 2, VE-cadherin (vascular epithelium) cadherin-5 cd144 antigen endothelial-specific cadherin vascular endothelial
Names	cadherin
Usage	Flow Cytometry: Flow cytometric analysis of HeLa cells. Recommended concentration:
Summary	10ug/ml.
Accession ID	NP_001786.2
Blocking Peptide	EBP12666
Immunogen	Peptide with sequence C-TVKYGQFDREHTK, from the internal region of the protein sequence according to NP_001786.2.
Peptide Sequence	C-TVKYGQFDREHTK

Shipping Instructions	Refrigerated
Predicted Species	Human
Reactive Species	Human
Human Gene ID	1003
Product Grade	https://prod-vector-labs-pimcore-assets.s3.us-east-1.amazonaws.com/assets/products/image/elite_medium.png
ELISA Detection Limit	Antibody detection limit dilution 1:32000.
Western Blot	Preliminary experiments gave an approx 100kDa band in lysates of cell line HeLa and approx. 110kDa in A549 at 1-2µg/ml antibody staining. Please note that currently we cannot find an explanation in the literature for the band we observed, given the calculated size of 87.5kDa according to NP_001786.2.
Application Type	Pep-ELISA, FC

DOCUMENTS

- [Data Sheet](#)

GALLERY IMAGES

