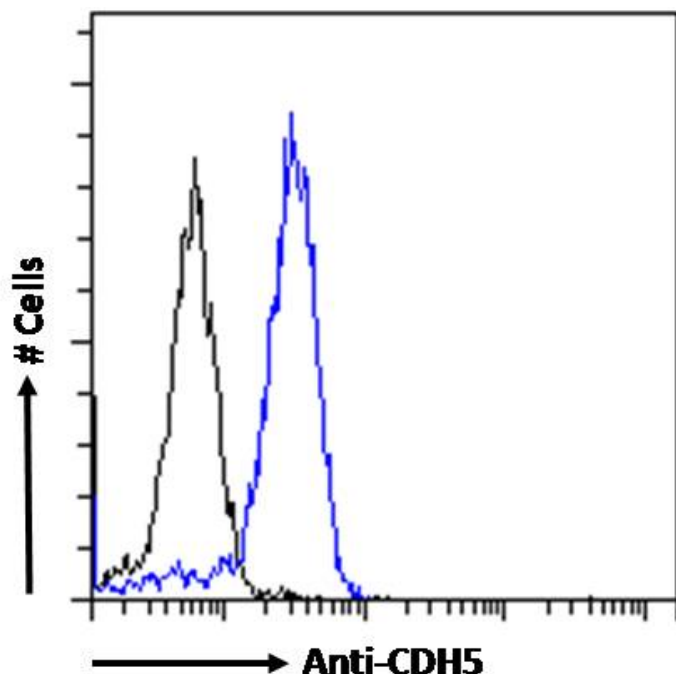


GOAT ANTI-VE-CADHERIN ANTIBODY

SKU: EB12667



SPECIFICATIONS

Formulation Supplied at 0.5 mg/ml in Tris saline, 0.02% sodium azide, pH7.3 with 0.5% bovine serum albumin.

Unit Size 100 µg

Storage Instructions Aliquot and store at -20°C. Minimize freezing and thawing.

Synonym / Alias Names CDH5|cadherin 5, type 2 (vascular endothelium)|7B4|CD144|7B4 antigen|VE-cadherin|cadherin 5, type 2, VE-cadherin (vascular epithelium)|cadherin-5|cd144 antigen|endothelial-specific cadherin|vascular endothelial cadherin

Usage Summary **Immunofluorescence:** Strong expression of the protein seen in the cytoplasm of HeLa cells. Recommended concentration: 10µg/ml. **Flow Cytometry:** Flow cytometric analysis of HeLa cells. Recommended concentration: 10ug/ml.

Accession ID NP_001786.2

Blocking Peptide EBP12667

Immunogen	Peptide with sequence C-KQARAHGKSVPE, from the internal region of the protein sequence according to NP_001786.2.
Peptide Sequence	C-KQARAHGKSVPE
Purification Method	Purified from goat serum by ammonium sulphate precipitation followed by antigen affinity chromatography using the immunizing peptide.
Shipping Instructions	Refrigerated
Predicted Species	Human, Pig, Cow
Reactive Species	Human
Human Gene ID	1003
Product Grade	https://prod-vector-labs-pimcore-assets.s3.us-east-1.amazonaws.com/assets/products/image/elite_medium.png
ELISA Detection Limit	Antibody detection limit dilution 1:128000.
Application Type	Pep-ELISA, IF, FC

DOCUMENTS

- [Data Sheet](#)

GALLERY IMAGES

