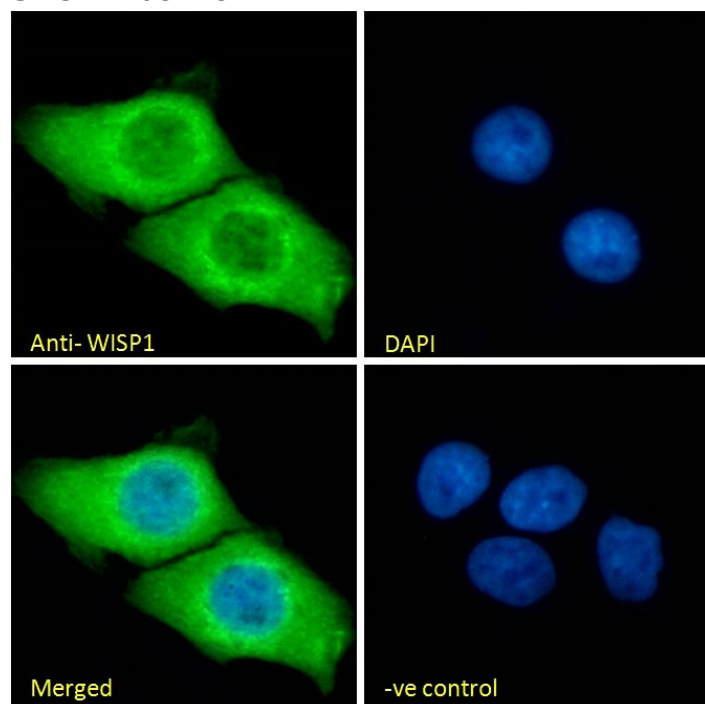


GOAT ANTI-WISP1 ANTIBODY

SKU: EB08178



SPECIFICATIONS

Formulation	Supplied at 0.5 mg/ml in Tris saline, 0.02% sodium azide, pH7.3 with 0.5% bovine serum albumin.
Unit Size	100 µg
Storage Instructions	Aliquot and store at -20°C. Minimize freezing and thawing.
Synonym / Alias Names	wnt-1 signaling pathway protein 1 Wnt-1 inducible signaling pathway protein 1 WNT1 induced secreted protein 1 WISP1tc WISP1i WISP1c CCN4 WNT1 inducible signaling pathway protein 1 WISP1
Usage Summary	Immunofluorescence: Strong expression of the protein seen in the cytoplasm of A431 and U2OS cells. Recommended concentration: 10µg/ml. Flow Cytometry: Flow cytometric analysis of A431 cells. Recommended concentration: 10ug/ml.
Accession ID	NP_003873.1; NP_543028.1
Blocking Peptide	EBP08178

Immunogen	Peptide with sequence C-ESYPDFSEIAN, from the C Terminus of the protein sequence according to NP_003873.1; NP_543028.1.
Product Comments	This antibody is expected to recognize both reported isoforms (NP_003873.1; NP_543028.1).
Peptide Sequence	C-ESYPDFSEIAN
Purification Method	Purified from goat serum by ammonium sulphate precipitation followed by antigen affinity chromatography using the immunizing peptide.
Shipping Instructions	Refrigerated
Predicted Species	Human, Mouse, Rat
Reactive Species	Human
Human Gene ID	8840
Mouse Gene ID	22402
Rat Gene ID	65154
Product Grade	https://prod-vector-labs-pimcore-assets.s3.us-east-1.amazonaws.com/assets/products/image/elite_plus_medium.png
ELISA Detection Limit	Antibody detection limit dilution 1:128000.
Western Blot	Approx 32-35kDa band observed in lysates of cell line CaCo-2 and approx. 40kDa in Human Tonsil lysates, and additionally in a lysate of cell line CaCo-2, which were successfully blocked by incubation with the immunising peptide (calculated MW of 30.7kDa according to NP_543028.1 and 40.3kDa according to NP_003873.1). Recommended concentration: 0.1-0.3µg/ml. Primary incubation 1 hour at room temperature.
Application Type	Pep-ELISA, WB, IF, FC

DOCUMENTS

- [Data Sheet](#)

GALLERY IMAGES

