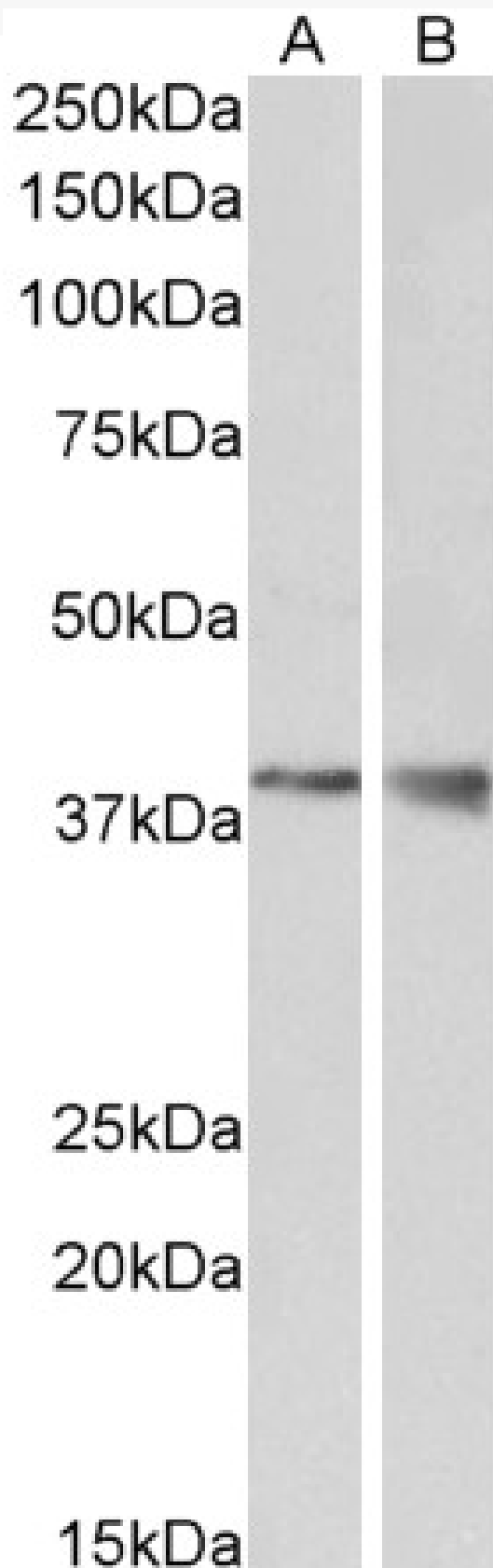


GOAT ANTI-WNT15 / WNT9B ANTIBODY

SKU: EB09452



SPECIFICATIONS

Formulation Supplied at 0.5 mg/ml in Tris saline, 0.02% sodium azide, pH7.3 with 0.5% bovine serum albumin.

Unit Size 100 µg

Storage Instructions Aliquot and store at -20°C. Minimize freezing and thawing.

Synonym / Alias Names wingless-type MMTV integration site family, member 15|WNT15|WNT14B|wingless-type MMTV integration site family, member 9B|WNT9B

Accession ID NP_003387.1

Blocking Peptide EBP09452

Immunogen Peptide with sequence C-KRGNKDLRARADA, from the internal region of the protein sequence according to NP_003387.1.

Peptide Sequence C-KRGNKDLRARADA

Purification Method Purified from goat serum by ammonium sulphate precipitation followed by antigen affinity chromatography using the immunizing peptide.

Shipping Instructions Refrigerated

Predicted Species Human, Mouse, Rat

Reactive Species Human, Mouse

Human Gene ID 7484

Mouse Gene ID 22412

Rat Gene ID 303586

Product Grade https://prod-vector-labs-pimcore-assets.s3.us-east-1.amazonaws.com/assets/products/image/elite_medium.png

ELISA Detection Limit Antibody detection limit dilution 1:8000.

Western Blot Approx 38kDa band observed in Human Brain Cerebellum lysates and in Mouse Kidney and Brain lysates (calculated MW of 39kDa according to NP_003387.1). Recommended concentration: 0.3-1µg/ml.

Application Type Pep-ELISA, WB

DOCUMENTS

- [Data Sheet](#)

GALLERY IMAGES

