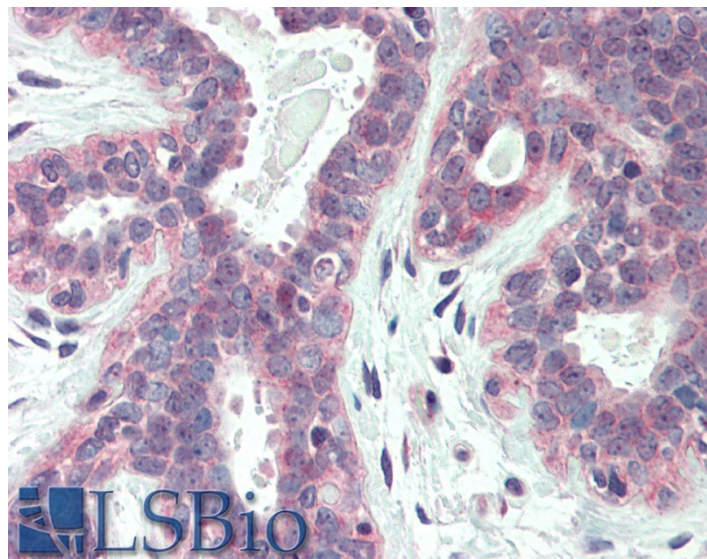


# GOAT ANTI-XBP1 / TREB5 ANTIBODY

**SKU:** EB08557



## SPECIFICATIONS

<b>Formulation</b>	Supplied at 0.5 mg/ml in Tris saline, 0.02% sodium azide, pH7.3 with 0.5% bovine serum albumin.
<b>Unit Size</b>	100 µg
<b>Storage Instructions</b>	Aliquot and store at -20°C. Minimize freezing and thawing.
<b>Synonym / Alias</b>	X-box-binding protein-1 OTTHUMP00000028682 XBP2 X-box binding protein 1 TREB5 XBP1
<b>Names</b>	
<b>Usage Summary</b>	<strong>Immunofluorescence:</strong> Expression of the protein seen in the endoplasmic reticulum, cytoplasm and nucleus of HeLa and MCF7 cells. Recommended concentration: 10µg/ml.
<b>Accession ID</b>	NP_001073007.1
<b>Blocking Peptide</b>	EBP08557
<b>Immunogen</b>	Peptide with sequence C-NHSWEDTFANELFPQ, from the internal region of the protein sequence according to NP_001073007.1.
<b>Product Comments</b>	This antibody is expected to recognise isoform XBP1(S) (NP_001073007.1) only, The epitope for EB08557 is aa358-372.
<b>Peptide Sequence</b>	C-NHSWEDTFANELFPQ

<b>Purification Method</b>	Purified from goat serum by ammonium sulphate precipitation followed by antigen affinity chromatography using the immunizing peptide.
<b>Shipping Instructions</b>	Refrigerated
<b>Predicted Species</b>	Human, Mouse, Rat, Dog
<b>Reactive Species</b>	Human
<b>Human Gene ID</b>	7494
<b>Mouse Gene ID</b>	22433
<b>Product Grade</b>	<a href="https://prod-vector-labs-pimcore-assets.s3.us-east-1.amazonaws.com/assets/products/image/elite_plus_medium.png">https://prod-vector-labs-pimcore-assets.s3.us-east-1.amazonaws.com/assets/products/image/elite_plus_medium.png</a>
<b>IHC Results</b>	Paraffin embedded Human Breast. Recommended concentration: 5µg/ml.
<b>ELISA</b>	
<b>Detection Limit</b>	Antibody detection limit dilution 1:4000.
<b>Western Blot</b>	Approx 38kDa band observed in Nuclear lysates of cell line HeLa (calculated MW of 40.1kDa according to NP_001073007.1). Recommended concentration: 1-3µg/ml. Primary incubation 1 hour.at room temperature.
<b>Application Type</b>	Pep-ELISA, WB, IF, IHC

## DOCUMENTS

- [Data Sheet](#)

## GALLERY IMAGES

