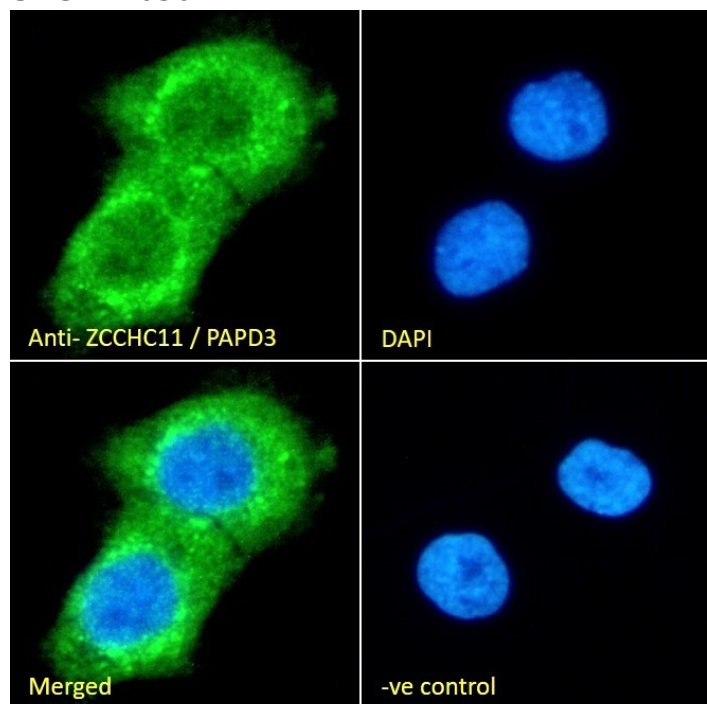


GOAT ANTI-ZCCHC11 / PAPD3 ANTIBODY

SKU: EB05042



SPECIFICATIONS

Formulation Supplied at 0.5 mg/ml in Tris saline, 0.02% sodium azide, pH7.3 with 0.5% bovine serum albumin.

Unit Size 100 µg

Storage Instructions Aliquot and store at -20°C. Minimize freezing and thawing.

Synonym /

Alias Names PAP associated domain containing 3|PAPD3|zinc finger, CCHC domain containing 11|KIAA0191|ZCCHC11

Usage Immunofluorescence: Strong expression of the protein seen in the cytoplasm of A431 cells.

Summary Recommended concentration: 10µg/ml.

Accession ID NP_001009881.1; NP_056084.1; NP_001009882.1

Blocking Peptide EBP05042

Immunogen Peptide with sequence RERCPHPRGNVSE, from the C Terminus of the protein sequence according to NP_001009881.1; NP_056084.1; NP_001009882.1.

Product	This antibody is expected to recognize all 3 reported isoforms (as represented by NP_001009881.1;
Comments	NP_056084.1; NP_001009882.1)
Peptide Sequence	RERCPHPPRGNVSE
Purification Method	Purified from goat serum by ammonium sulphate precipitation followed by antigen affinity chromatography using the immunizing peptide.
Shipping Instructions	Refrigerated
Predicted Species	Human, Mouse, Rat, Dog, Cow
Reactive Species	Human
Human Gene ID	23318
Product Grade	https://prod-vector-labs-pimcore-assets.s3.us-east-1.amazonaws.com/assets/products/image/elite_medium.png
IHC Results	In paraffin embedded Human Lymph Node shows nuclear staining of select lymphocytes and staining of macrophages. Recommended concentration: 2-6µg/ml.
ELISA	
Detection Limit	Antibody detection limit dilution 1:16000.
Application Type	Pep-ELISA, IF, IHC

DOCUMENTS

- [Data Sheet](#)

GALLERY IMAGES

